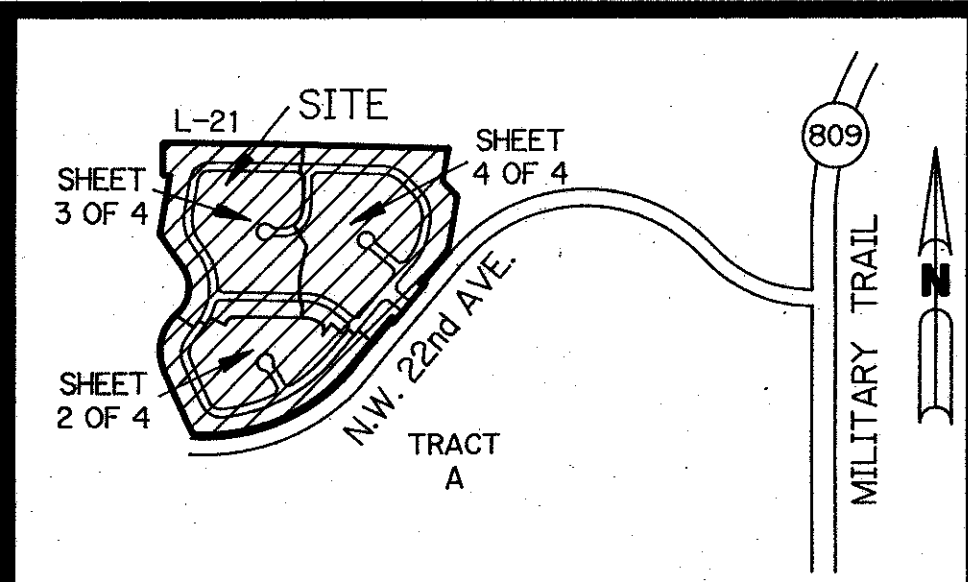


(A P.U.D.)

RAINBOW LAKES - TRACT "E"

A REPLAT OF TRACT "E" ACCORDING TO THE PLAT OF TARTAN LAKES PLAT. 3 - P.U.D. AS RECORDED IN PLAT BOOK 51, PAGES 170 THROUGH 174 INCLUSIVE OF THE PUBLIC RECORDS OF PALM BEACH COUNTY, FLORIDA. SECTIONS 14 AND 15, TOWNSHIP 45 SOUTH, RANGE 42 EAST



LOCATION MAP
SEC. 14 & 15, TWP. 45 S., RGE. 42 E.

THIS INSTRUMENT PREPARED BY
PERRY C. WHITE P.L.S. 4213 STATE OF FLORIDA
LAWSON, NOBLE AND ASSOCIATES, INC.
ENGINEERS PLANNERS TESTING SURVEYORS
BOYNTON BEACH, FLORIDA

SHEET 1 OF 4 NOVEMBER, 1987

DEDICATION:

KNOW ALL MEN THESE PRESENTS, THAT G.L. HOMES OF RAINBOW LAKES ASSOCIATES, A FLORIDA JOINT VENTURE, OWNERS OF THE LANDS SHOWN HEREON AS RAINBOW LAKES - TRACT "E" BEING A REPLAT OF ALL OF TRACT "E" ACCORDING TO THE PLAT OF TARTAN LAKES PLAT NO. 3 - P.U.D. AS RECORDED IN PLAT BOOK 51, PAGES 170 THROUGH 174 INCLUSIVE, OF THE PUBLIC RECORDS OF PALM BEACH COUNTY, FLORIDA.

SAID LANDS SITUATE, LYING AND BEING IN PALM BEACH COUNTY, FLORIDA, CONTAINING 56.23 ACRES MORE OR LESS.

HAS CAUSED THE SAME TO BE SURVEYED AND PLATTED IS SHOWN HEREON, AND DOES HEREBY DEDICATE AS FOLLOWS:

- STREETS - AS SHOWN HEREON ARE HEREBY DEDICATED TO THE BOARD OF COUNTY COMMISSIONERS OF PALM BEACH COUNTY, FLORIDA, FOR THE PERPETUAL USE OF THE PUBLIC FOR PROPER PURPOSES.
- WATER MANAGEMENT TRACTS - AS SHOWN HEREON ARE HEREBY DEDICATED TO AND ARE THE PERPETUAL MAINTENANCE OBLIGATION OF THE RAINBOW LAKES COMMUNITY MASTER ASSOCIATION, INC., FOR WATER MANAGEMENT AND DRAINAGE EASEMENT PURPOSES WITHOUT RECOURSE TO PALM BEACH COUNTY. HOWEVER, PALM BEACH COUNTY SHALL HAVE THE RIGHT, BUT NOT THE OBLIGATION, TO MAINTAIN THAT PORTION OF THE WATER MANAGEMENT TRACT WHICH IS ASSOCIATED WITH THE DRAINAGE OF PALM BEACH COUNTY ROADS.
- RECREATION AREA - AS SHOWN HEREON IS HEREBY DEDICATED TO AND IS THE PERPETUAL MAINTENANCE OBLIGATION OF THE COLORS AT RAINBOW LAKES HOMEOWNERS ASSOCIATION, INC., ITS SUCCESSORS AND ASSIGNS, OR RECREATION PURPOSES, WITHOUT RECOURSE TO PALM BEACH COUNTY.
- DRAINAGE EASEMENTS - THAT THE EASEMENTS SHOWN HEREON AND DESIGNATED AS DRAINAGE EASEMENTS ARE HEREBY DEDICATED TO AND ARE THE PERPETUAL MAINTENANCE OBLIGATION OF THE COLORS AT RAINBOW LAKES HOMEOWNERS ASSOCIATION, INC., ITS SUCCESSORS AND ASSIGNS, OR THE CONSTRUCTION AND MAINTENANCE OF DRAINAGE FACILITIES, WITHOUT RECOURSE TO PALM BEACH COUNTY. HOWEVER, PALM BEACH COUNTY SHALL HAVE THE RIGHT, BUT NOT THE OBLIGATION, TO MAINTAIN THAT PORTION OF THE DRAINAGE SYSTEM WHICH IS ASSOCIATED WITH THE DRAINAGE OF PALM BEACH COUNTY ROADS.
- LAKE MAINTENANCE EASEMENTS - AS SHOWN HEREON AND DESIGNATED AS LAKE MAINTENANCE EASEMENTS ARE HEREBY DEDICATED TO AND ARE THE PERPETUAL MAINTENANCE OBLIGATION OF THE RAINBOW LAKES COMMUNITY MASTER ASSOCIATION, INC., ITS SUCCESSORS AND ASSIGNS, FOR LAKE MAINTENANCE PURPOSES, WITHOUT RECOURSE TO PALM BEACH COUNTY. HOWEVER, PALM BEACH COUNTY SHALL HAVE THE RIGHT, BUT NOT THE OBLIGATION, TO MAINTAIN THAT PORTION OF THE LAKE MAINTENANCE EASEMENT WHICH IS ASSOCIATED WITH THE DRAINAGE OF PALM BEACH COUNTY ROADS.
- LAKE MAINTENANCE ACCESS EASEMENTS - AS SHOWN HEREON AND DESIGNATED AS LAKE MAINTENANCE ACCESS EASEMENTS ARE HEREBY DEDICATED TO AND ARE THE PERPETUAL MAINTENANCE OBLIGATION OF THE RAINBOW LAKES COMMUNITY MASTER ASSOCIATION, INC., FOR LAKE MAINTENANCE ACCESS PURPOSES, WITHOUT RECOURSE TO PALM BEACH COUNTY. HOWEVER, PALM BEACH COUNTY SHALL HAVE THE RIGHT, BUT NOT THE OBLIGATION, TO MAINTAIN THAT PORTION OF THE LAKE MAINTENANCE ACCESS EASEMENT WHICH IS ASSOCIATED WITH THE DRAINAGE OF PALM BEACH COUNTY ROADS.
- UTILITY EASEMENTS - AS SHOWN HEREON AND DESIGNATED AS UTILITY EASEMENTS ARE HEREBY DEDICATED TO THE BOARD OF COUNTY COMMISSIONERS OF PALM BEACH COUNTY, FOR THE CONSTRUCTION AND MAINTENANCE OF UTILITIES AND CABLE TELEVISION SYSTEMS.
- OPEN SPACE - TRACTS OS-1 THROUGH OS-14 AS SHOWN HEREON ARE HEREBY DEDICATED TO AND ARE THE PERPETUAL MAINTENANCE OBLIGATION OF THE COLORS AT RAINBOW LAKES HOMEOWNERS ASSOCIATION, INC., ITS SUCCESSORS AND ASSIGNS, FOR OPEN SPACE PURPOSES, WITHOUT RECOURSE TO PALM BEACH COUNTY. TRACTS OS-2, OS-3, OS-4, OS-5, OS-7, OS-8, OS-10 & OS-12 ARE ADDITIONALLY DESIGNATED FOR DRAINAGE PURPOSES.
- LIMITED ACCESS EASEMENT - THE LIMITED ACCESS EASEMENTS SHOWN HEREON ARE HEREBY DEDICATED TO THE BOARD OF COUNTY COMMISSIONERS OF PALM BEACH COUNTY, FOR THE PURPOSE OF CONTROL AND JURISDICTION OVER ACCESS RIGHTS.

MORTGAGEE'S CONSENT:

STATE OF FLORIDA S.S.
COUNTY OF PALM BEACH
THE UNDERSIGNED HEREBY CERTIFIES THAT IT IS THE HOLDER OF MORTGAGE UPON THE PROPERTY DESCRIBED HEREON AND DOES HEREBY JOIN IN AND CONSENT TO THE DEDICATION OF THE LAND DESCRIBED IN SAID DEDICATION BY THE OWNER THEREOF AND AGREES THAT ITS MORTGAGE LIEN, OR OTHER ENCUMBRANCE WHICH IS RECORDED IN OFFICIAL RECORD BOOK 3500 AT PAGE 797 OF THE PUBLIC RECORDS OF PALM BEACH COUNTY, FLORIDA, SHALL BE SUBORDINATED TO THE DEDICATION SHOWN HEREON. IN WITNESS WHEREOF, THE SAID CORPORATION HAS CAUSED THESE PRESENTS TO BE SIGNED BY ITS VICE PRESIDENT ATTESTED TO BY ITS VICE PRESIDENT AND ITS CORPORATE SEAL TO BE AFFIXED HEREON BY AND WITH THE AUTHORITY OF ITS BOARD OF DIRECTORS THIS 29th DAY OF April A.D., 1988.

COMMONWEALTH SAVINGS AND LOAN ASSOCIATION OF FLORIDA CORPORATION OF THE STATE OF FLORIDA

ATTEST: Cathy L. Elliott
Cathy L. Elliott
ITS: VICE PRESIDENT

BY: Nancy E. Fear
Nancy E. Fear
ITS: VICE PRESIDENT

ACKNOWLEDGEMENT:

STATE OF FLORIDA S.S.
COUNTY OF PALM BEACH
I HEREBY CERTIFY THAT ON THIS DAY BEFORE ME PERSONALLY APPEARED Nancy E. Fear and Cathy L. Elliott TO ME WELL KNOWN, AND KNOWN TO ME TO BE THE INDIVIDUALS DESCRIBED IN AND WHO EXECUTED THE FOREGOING INSTRUMENT AS VICE PRESIDENT AND VICE PRESIDENT, RESPECTIVELY, OF COMMONWEALTH SAVINGS & LOAN ASSOCIATION OF FLORIDA, A FLORIDA CORPORATION AND SEVERALLY ACKNOWLEDGED TO AND BEFORE ME THAT THEY EXECUTED SUCH INSTRUMENT AS SUCH OFFICERS OF SAID CORPORATION, AND THAT THE SEAL AFFIXED TO THE FOREGOING INSTRUMENT IS THE CORPORATE SEAL OF SAID CORPORATION AND THAT IT WAS AFFIXED TO SAID INSTRUMENT BY DUE AND REGULAR CORPORATE AUTHORITY, AND THAT SAID INSTRUMENT IS THE FREE ACT AND DEED OF SAID CORPORATION.

WITNESS MY HAND AND OFFICIAL SEAL THIS 29 DAY OF April A.D., 1988.

MY COMMISSION EXPIRES

Ernie White
NOTARY PUBLIC - STATE OF FLORIDA

TITLE CERTIFICATION:

STATE OF FLORIDA S.S.
COUNTY OF PALM BEACH
WE, CHICAGO TITLE INSURANCE COMPANY DULY LICENSED IN THE STATE OF FLORIDA, DO HEREBY CERTIFY THAT WE HAVE EXAMINED THE TITLE TO THE HEREON DESCRIBED PROPERTY; THAT WE FIND THE TITLE TO THE PROPERTY IS VESTED IN G.L. HOMES OF RAINBOW LAKES ASSOCIATES, A FLORIDA JOINT VENTURE, THAT THE CURRENT TAXES HAVE BEEN PAID; AND THAT WE FIND THAT THE PROPERTY IS FREE OF ENCUMBRANCES OTHER THAN THOSE SHOWN HEREON; AND THAT WE FIND THAT ALL MORTGAGES ARE SHOWN AND ARE TRUE AND CORRECT, AND WE FIND THAT THERE ARE NO OTHER ENCUMBRANCES OF RECORD OTHER THAN THOSE SHOWN.

DATE: May 3, 1988

Ernie White
ERNIE WHITE, TITLE OFFICER
CHICAGO TITLE INSURANCE COMPANY
2393 S. CONGRESS AVE.
WEST PALM BEACH, FLORIDA 33406

IN WITNESS WHEREOF G.L. HOMES OF RAINBOW LAKES ASSOCIATES, A FLORIDA JOINT VENTURE, HAS CAUSED THESE PRESENTS TO BE SIGNED BY THE PRESIDENT AND ATTESTED BY THE VICE PRESIDENT OF G.L. HOMES OF RAINBOW LAKES CORPORATION, ITS MANAGING VENTURER AND HIS OFFICIAL SEAL TO BE AFFIXED HERETO BY AND WITH THE AUTHORITY OF ITS BOARD OF DIRECTORS, THIS 29 DAY OF April A.D., 1988.

G.L. HOMES OF RAINBOW LAKES ASSOCIATES, A FLORIDA JOINT VENTURE
BY: G.L. HOMES OF RAINBOW LAKES CORPORATION, ITS MANAGING VENTURER

ATTEST: Alan Fant
ITS: VICE PRESIDENT
BY: Itzhak Ezratti
ITS: PRESIDENT

ACKNOWLEDGEMENT:

STATE OF FLORIDA S.S.
COUNTY OF PALM BEACH
BEFORE ME PERSONALLY APPEARED ITZHAK EZRATTI AND ALAN FANT, TO ME WELL KNOWN, AND KNOWN TO ME TO BE THE INDIVIDUALS DESCRIBED IN AND WHO EXECUTED THE FOREGOING INSTRUMENT AS PRESIDENT AND VICE PRESIDENT, RESPECTIVELY, OF G.L. HOMES OF RAINBOW LAKES CORPORATION, MANAGING VENTURER OF G.L. HOMES OF RAINBOW LAKES ASSOCIATES, A FLORIDA JOINT VENTURE, AND SEVERALLY ACKNOWLEDGED TO AND BEFORE ME THAT THEY EXECUTED SUCH INSTRUMENT AS SUCH OFFICERS OF SAID CORPORATION, AND THAT THE SEAL AFFIXED TO THE FOREGOING INSTRUMENT IS THE OFFICIAL SEAL OF SAID CORPORATION AND THAT IT WAS AFFIXED TO SAID INSTRUMENT BY DUE AND REGULAR CORPORATE AUTHORITY, AND THAT SAID INSTRUMENT IS THE FREE ACT AND DEED OF SAID CORPORATION AND JOINT VENTURE.

WITNESS MY HAND AND OFFICIAL SEAL THIS 29 DAY OF April A.D., 1988

MY COMMISSION EXPIRES NOTARY PUBLIC - STATE OF FLORIDA

SITE PLAN DATA:

TOTAL AREA	56.23 ACRES
TOTAL NO. OF LOTS	209
DENSITY	3.72 UNITS/ACRE
WATER MANAGEMENT TRACT AREA	10.66 ACRES
OPEN SPACE	4.42 ACRES
RECREATION TRACT	154 ACRES

**BOARD OF COUNTY COMMISSIONERS
PALM BEACH COUNTY, FLIDA**

THIS PLAT IS HEREBY APPROVED RECORD THIS 7th DAY OF JUNE A.D., 1988.

BY: Carol Roberts
Carol Roberts
CHAIR

ATTEST: JOHN B. DUNKLE, CLERK

BY: Ruth H. Compton
Ruth H. Compton
DEPUTY CLERK

COUNTY ENGINEER:

THIS PLAT IS HEREBY APPROVED RECORD THIS 7th DAY OF JUNE A.D., 1988.

BY: Herbert F. Kahlert, P.E.
Herbert F. Kahlert, P.E.

SURVEYOR'S NOTES:

- DENOTES PERMANENT REFERENCE MONUMENT (P.R.M.)
- DENOTES CONTROL POINT (C.P.)
- D.E. DENOTES DRAINAGE EASEMENT
- U.E. DENOTES UTILITY EASEMENT
- L.M.E. DENOTES LAKE MAINTENANCE EASEMENT
- THE BEARINGS SHOWN HEREON ARE BASED ON A BEARING OF N.88°24'36"W. ALONG THE EASTERLY NORTH LINE OF THE CORNER OF SAID TARTAN LAKES PLAT NO. 3 - P.U.D., WITHIN SECTION 14, TOWNSHIP 45 SOUTH, RANGE 42 EAST, PALM BEACH COUNTY, FLORIDA.
- THERE SHALL BE NO BUILDINGS OR ANY KIND OF CONSTRUCTION PLACED ON UTILITY OR DRAINAGE EASEMENTS. CONSTRUCTION OR LANDSCAPING UPON MAINTENANCE OR MAINTENANCE ACCESS EASEMENTS MUST BE IN ACCORDANCE WITH ORDINANCE 86-21 AND ALL OTHER BUILDING AND ZONING CODES AND ORDINANCES OF PALM BEACH COUNTY.
- THERE SHALL BE NO TREES OR RUBS PLACED ON UTILITY EASEMENTS WHICH ARE PROVIDED FOR WATER AND SEWER USE OR ON DRAINAGE OR ACCESS EASEMENTS.
- LANDSCAPING ON OTHER UTILITY EASEMENTS SHALL BE ALLOWED ONLY AFTER CONSENT OF ALL UTILITY COMPANIES OCCUPYING SAME.
- ALL LINES INTERSECTING CIRCULAR CURVES ARE RADIAL UNLESS OTHERWISE NOTED:
(N.R.) = NON-RADIAL
(R.F.) = RADIAL TO FRONT LOT LINE
(R.R.) = RADIAL TO REAR LOT LINE
- THERE MAY BE ADDITIONAL RESTRICTIONS THAT ARE NOT RECORDED ON THIS PLAT THAT MAY BE FOUND IN THE PUBLIC RECORDS OF PALM BEACH COUNTY.
- IN INSTANCES WHERE DRAINAGE AND UTILITY EASEMENTS INTERSECT, THE AREA WITHIN THE INTERSECTION ARE DRAINAGE AND UTILITY EASEMENTS. CONSTRUCTION AND MAINTENANCE OF UTILITY FACILITIES SHALL NOT INTERFERE WITH THE DRAINAGE FACILITIES WITHIN THE AREAS OF INTERSECTION.
- L.A.E. DENOTES LIMITED ACCESS EASEMENT
- THERE SHALL BE NO ABOVE GROUND APERTANCES WITHIN THE 20' LAKE MAINTENANCE EASEMENT WITHOUT THE CONSENT OF PALM BEACH COUNTY.

SURVEYOR'S CERTIFICATE:

STATE OF FLORIDA S.S.
COUNTY OF PALM BEACH

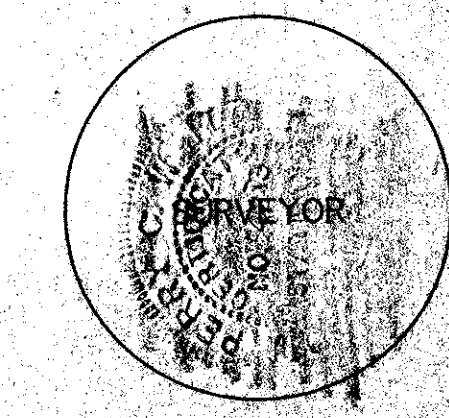
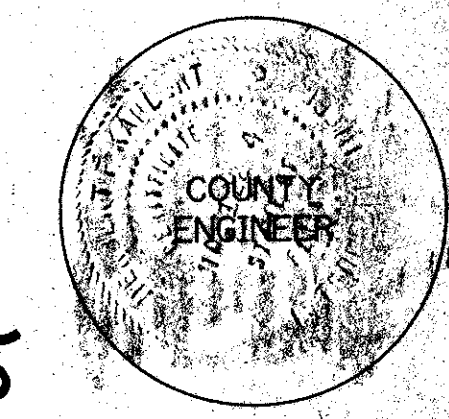
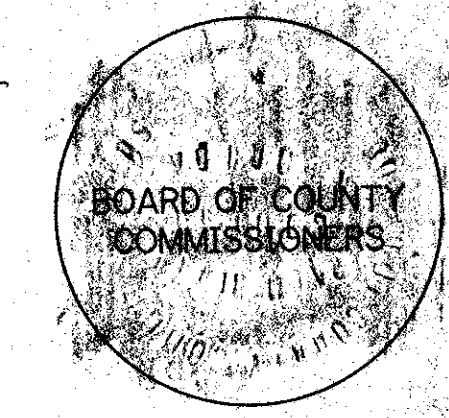
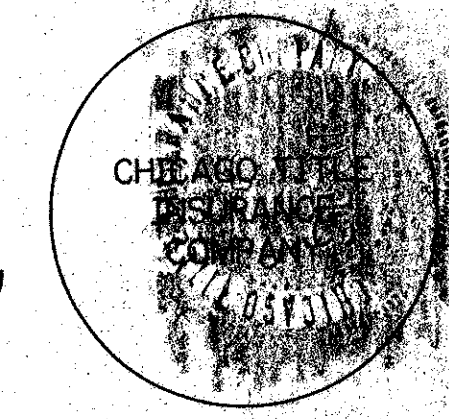
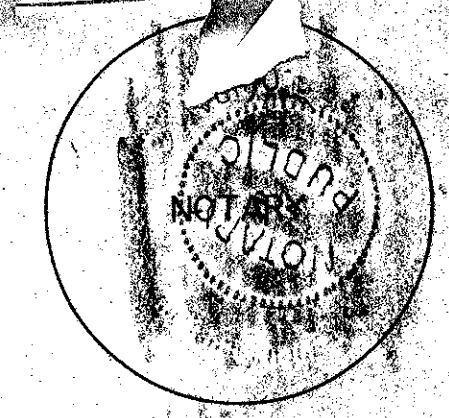
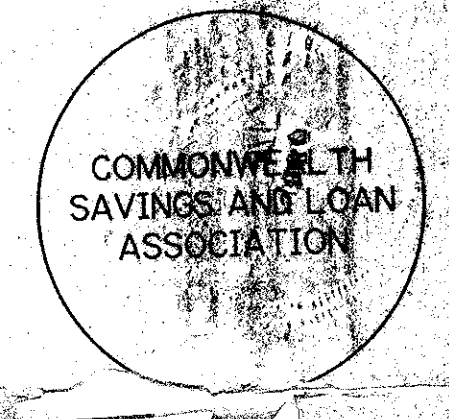
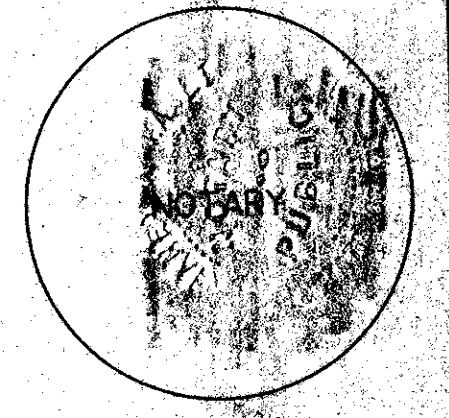
THIS IS TO CERTIFY THAT THE PLAT SHOWN HEREON IS A TRUE AND CORRECT REPRESENTATION OF A SURVEY MADE UNDER BY RESPONSIBLE DIRECTION AND SUPERVISION AND THAT SAID SURVEY IS ACCURATE TO THE BEST OF MY KNOWLEDGE AND BELIEF AND THAT PERMANENT REFERENCE MONUMENTS HAVE BEEN SET AND THAT PERMANENT CONTROL POINTS WILL BE SET UNDER THE GUARANTEES POSTED WITH THE BOARD OF COUNTY COMMISSIONERS FOR THE REQUIRED IMPROVEMENTS, AND FURTHER THAT THE SURVEY DATA COMPLIES WITH ALL OF THE REQUIREMENTS OF CHAPTER 177, FLORIDA STATUTE, AS AMENDED, AND IN ACCORDANCE WITH THE SURVEYING STANDARDS CONTAINED WITHIN CHAPTER 21 HH-6, FLORIDA ADMINISTRATIVE CODE, SET FORTH BY THE FLORIDA BOARD OF LAND SURVEYORS, PURSUANT TO SECTION 472.027, FLORIDA STATUTES, AND ORDINANCES OF PALM BEACH COUNTY, FLORIDA.

DATE: May 3, 1988

Perry C. White
PERRY C. WHITE
PROFESSIONAL LAND SURVEYOR NO. 4213
STATE OF FLORIDA

CLERK OF CIRCUIT COURT

NOTARY PUBLIC
STATE OF FLORIDA
10 JUNE
88
59
184-187
Arbaco, A. Platt



1987-1988
Rainbow Lakes E
PAGE 184
FLOOD MAP 15-054
ZONING RT5
ZIP CODE 33437
Tartan Lakes, FL

59/184
RAINBOW LAKES TRACT E